



### Universal Communications

- 3 Ports to Support All Games
  - USB 2.0 Full Speed (Future GSA Compliant, IGT Compliant)
  - RS232 Port (Backward Compatible)
  - NetPlex Port (Backward Compatible)

### ITH® (Intelligent Ticket Handling)

- Makes Ticket Available ONLY after Fully Printed Internally & Automatically Burst

### IntelligentBezel™ System

- Paper Jam Reduction via Blocked Bezel Detection

### Award-Winning Printer

- Most Decorated Printer in Gaming

### Superior Electro-Mechanical Design

- High Reliability and Easy Maintenance

### ProColor™ Printing

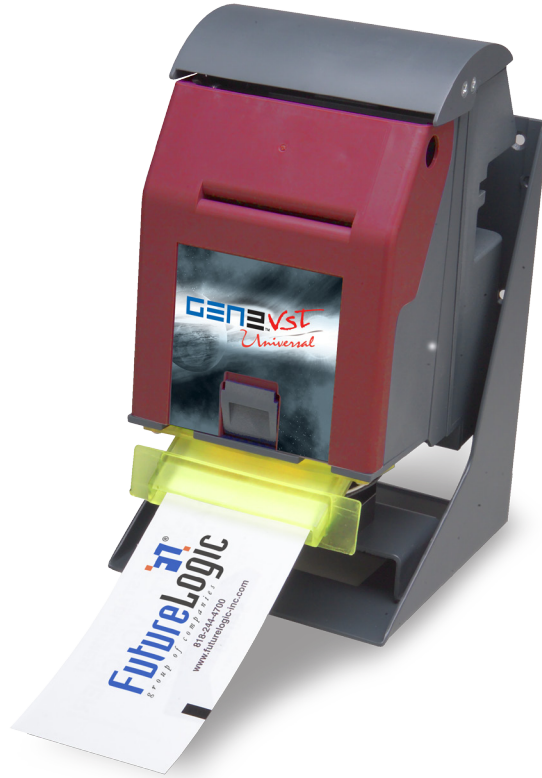
- Readily Available 2-Color Printing Technology

### Expanded Graphics Memory

- Stores Hundreds of Clip Art Objects and Thousands of Graphic Templates

### Hot Swappable

- Printer Removal Without Powering Down



The vertical configuration of the GEN2 VST Universal™ TITO printer is designed for space-saving slim-top gaming machines. Developed with design feedback from global gaming OEMs and casinos, GEN2 VST Universal printers are compatible with existing gaming platforms (RS232 and NetPlex) as well as the next generation of USB games.

The GEN2 VST Universal printers anticipate new GSA standards for downloadable games, are IGT compliant and permit in-game firmware updates via the USB communications port. In addition to the interoperability and ease of integration required for the next generation of electronic games, the GEN2 VST Universal printers offer compatibility with existing games on your floor, allowing you to specify a single printer for your entire property.

### General

<b>Dimensions (WxDxH)</b>	130mm x 159mm x 229mm
<b>Weight</b>	5 lbs.
<b>Power Requirements</b>	24Vdc @ 2.7A
<b>Sensors</b>	Paper Low, Paper Out, Printer Drawer Open, Ticket Taken, Ticket Jam, Ticket in Chute, Black Mark (Includes a Host Controllable Buzzer)
<b>Printing Speed</b>	90mm/Second (3.5"/Second)
<b>Print and Present</b>	2.2 Seconds
<b>Printing Width</b>	62mm (true near-edge printing)
<b>Storage</b>	200 Tickets
<b>Resolution</b>	8 dots/mm (203 dpi)
<b>Firmware</b>	Application in Memory is Reprogrammable (via Flash BIOS)
<b>Self Test</b>	Yes
<b>Page Mode</b>	Full Page Mode Printing (Simultaneous 4 Orientation Printing: 0°, 90°, 180°, 270°), Line and Box Draw Printer Resident, Bitmap Graphics, Printer Resident (Stored in Flash) Graphics
<b>Paper Loading</b>	Manual
<b>Paper Feed</b>	Automatic
<b>Media</b>	Direct Thermal, Top Coated, Fanfolded and Perforated
<b>Paper Specification</b>	66mm W x 156mm L 4.5 mil, 1 Color/2 Colors
<b>Bezel Control</b>	Two High Current Ticket Printing Bezel Control Ports
<b>User Interface</b>	4 LED Indicators, Paper Advance Button
<b>Upgrade Port</b>	Allows for Printer Upgrades via USB Download Port or RS232C Main port
<b>Hot Swappable</b>	100%

### Printing Resources

<b>Template Capacity</b>	4Mb; Stores Hundreds of Clip Art Objects & Thousands of Graphic Templates
<b>Graphic Storage</b>	4Mb
<b>Color Printing</b>	Red on Black and Blue on Black are Available. Other Colors can be Supported as the Print Media Becomes Available. Color Selection is Controlled Through the TCL™ Language.

### Characteristics

<b>Printer Languages</b>	TCL Printer Language (Page Description Language) Subset of ESCP2
<b>Fonts</b>	8 (2.5 cpi, 3.3 cpi, 4.0 cpi, 5.5 cpi, 5.6 cpi, 7.3 cpi, 10.1 cpi, 20.5 cpi)
<b>Font Scalability</b>	May Be Independently Scaled from 1x – 7x in Both Height and Width
<b>Bar codes</b>	PDF-417, Interleaved 2 of 5, Code 39, UPC-A, UPC-E, UPC-E+2, UPC-E+5, Codabar, EAN-13, EAN-8, Code 128, MSI
<b>Memory</b>	2MB with 512K RAM

### Interface

<b>Communications</b>	USB 2.0 game interface (full speed of 12Mbps) with separate USB Download Port, Future GSA Compliant, Compliant with GSA GDS, IGT USB and traditional communication protocols RS232C and Netplex
-----------------------	---

### Environmental

<b>Operating Temperature</b>	0°C to 65°C
<b>Storage Temperature</b>	-20°C to 75°C
<b>Operating Humidity</b>	5 to 85% RH non-condensing

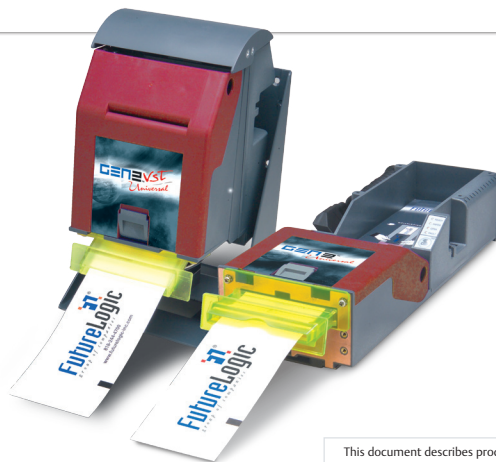
### Reliability

<b>Maintenance</b>	Annual Print Head Cleaning Required
<b>Print Head Life</b>	100km Min. (656,000 Tickets Based on US Currency Size)
<b>Certifications</b>	ISO 9001, CE Certified, RoHS, UL



#### Contact Information:

Slot Technicians: slottechsupport@futurelogic-inc.com  
 General Information: info@futurelogic-inc.com  
 Website: www.futurelogic-inc.com



This document describes product functions and technology that may not be available in a particular gaming jurisdiction, and would therefore not be available for sale and not approved for use at this time. Please contact your local sales representative for information concerning what features are available in your jurisdiction. All mentions of "voucher" or "vouchers" in this document refer to "Slot Machine Payout Receipt" or "Slot Machine Wagering Voucher" and all mentions of "coupon" or "coupons" in this document refer to "Slot Machine Coupon" according to **Technical Standards for Gaming and Online Slot Machines (Rev 03/06)**.

**FutureLogic, Inc.**  
 425 E. Colorado Street, Suite 100  
 Glendale, CA 91205  
 United States of America  
 Tel: 818.244.4700  
 Fax: 818.244.4764

**FutureLogic Europe**  
 Unit 6, Cordwallis Industrial Estate  
 Clivemont Road, Maidenhead, SL6 7BU  
 United Kingdom  
 Tel: +44.1628 760.080  
 Fax: +44.1628.760.089

**FutureLogic Asia**  
 Avenida Da Praia Grande, No. 369-371  
 Edificio Keng Ou, 20 andar A  
 Macau  
 tel: +853.2838.9702  
 fax: +853.2838.9701

**FutureLogic Australia**  
 Suite 2201, Level 22, Westfield Tower 2  
 Bondi Junction, NSW 2202  
 Australia  
 tel: +61.1300.643.683  
 fax: +61.1300.362.743