



Universal Communications

- Can be Configured to Handle 2 Communication Ports - USB and RS232 (Ethernet Optional)

Reliable Performance

- ITH® (Intelligent Ticket Handling) technology virtually eliminates ticket jams by making ticket available only after it's been fully printed and burst

Superior Electro-Mechanical Design

- High Reliability and Easy Maintenance

ProColor™ Printing

- Exceptional 2-Color Imaging Technology

Fast Printing Speed

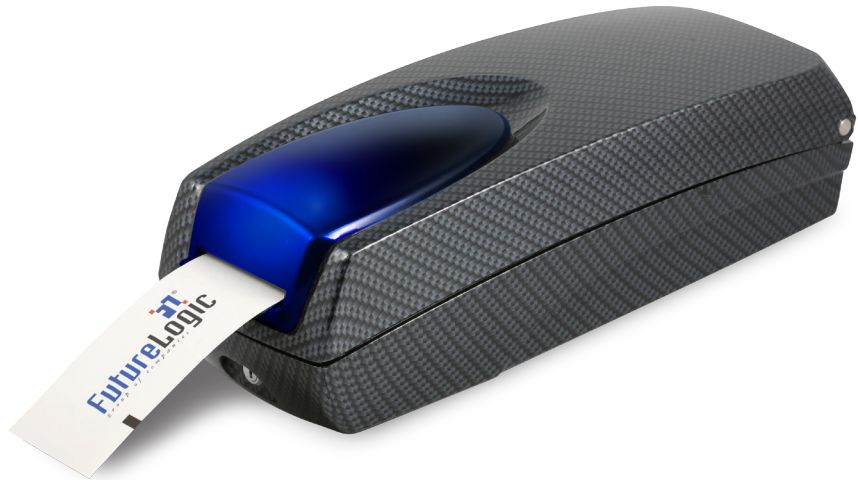
- Prints and Presents in 2.2 Seconds

Large Fill Capacity

- Stores up to 300 Tickets

Expanded Graphics Memory

- Stores Hundreds of Clip Art Objects and Thousands of Graphic Templates



The CouponXpress™ desktop TITO/coupon printer builds on the technology that has made FutureLogic the leading manufacturer of TITO printers – bringing all of the popular GEN2 Universal™ printer's features, functions and flexibility from the game to the cashier's cage, hotel front desk, unattended kiosks and other transaction points.

Compatible with traditional gaming protocols as well as new USB communications, The CouponXpress printer enables fast, convenient TITO transactions, such as ticket purchases, consolidation, or replacement of torn or crumpled tickets. It can also be used to distribute targeted promotional coupons at different venues – such as at the

concierge desk, gas station, gift shop, or hotel rooms – to reward, retain or recruit casino patrons.

Housed in an attractive and rugged cabinet, the CouponXpress printer provides the convenience, flexibility and reliable performance needed for effective coupon campaigns. Fast 3.5 inch per second printing, large ticket storage capacity, and ITH® (Intelligent Ticket Handling) technology combine to maximize the CouponXpress printer's uptime and reliability. Additionally, high-resolution two-color printing and storage for hundreds of clip art objects and thousands of graphic templates facilitates ticket customization and branding.

General		Printing Resources	
Dimensions (WxDxH)	147.3mm x 372.1mm x 111.2mm	Template Capacity	4Mb; Stores Hundreds of Clip Art Objects & Thousands of Graphic Templates
Weight	1.23 kg (2.7 lbs.)	Graphic Storage	4Mb
Power Requirements	110Vac via 24Vdc @ 2.7A External Power Supply (Included with Unit)	Color Printing	Red on Black and Blue on Black are Available. Other Colors can be Supported as the Print Media Becomes Available. Color Selection is Controlled Through the TCL™ Language.
Sensors	Paper Low, Paper Out, Printer Drawer Open, Ticket Taken, Ticket Jam, Ticket in Chute, Black Mark	Characteristics	
Printing Speed	90mm/Second (3.5"/Second)	Printer Languages	TCL Printer Language (Page Description Language) Subset of ESCP2
Print and Present Time	2.2 Seconds	Fonts	8 (2.5 cpi, 3.3 cpi, 4.0 cpi, 5.5 cpi, 5.6 cpi, 7.3 cpi, 10.1 cpi, 20.5 cpi)
Printing Width	62mm (True Near-Edge Printing)	Font Scalability	May Be Independently Scaled from 1x – 7x in Both Height and Width
Storage	300 Tickets	Bar codes	PDF-417, Interleaved 2 of 5, Code 39, UPC-A, UPC-E, UPC-E+2, UPC-E+5, Codabar, EAN-13, EAN-8, Code 128, MSI
Resolution	8 dots/mm (203 dpi)	Memory	8MB with 512K RAM
Firmware	Application in Memory is Reprogrammable (via Flash BIOS)	Interface	
Self Test	Yes	Communications	Bi-directional RS232C USB 2.0 Game Interface (Full Speed of 12Mbps) with Separate USB Download Port, GSA Compliant
Page Mode	Full Page Mode Printing (Simultaneous 4 Orientation Printing: 0°, 90°, 180°, 270°), Line and Box Draw Printer Resident, Bitmap Graphics, Printer Resident (Stored in Flash) Graphics	Environmental	
Paper Loading	Manual	Operating Temperature	0°C to 65°C
Paper Feed	Auto Load	Storage Temperature	-20°C to 75°C
Media	Direct Thermal, Top Coated, Fanfolded and Perforated	Operating Humidity	5 to 85% RH Non-Condensing
Paper Specification	66mm W x 156mm L 4.5 mil, 1 Color/2 Colors	Reliability	
Bezel	Lighted, Two High Current Ticket Printing Bezel Control Ports	Maintenance	Annual Print Head Cleaning Required
User Interface	4 LED Indicators, Paper Advance Button (located on the printer)	Print Head Life	100km Min. (656,000 Tickets Based on Standard Size TITO Tickets)
Upgrade Port	Allows for Printer Upgrades via Rear or Internal USB Upgrade Port	Certifications	ISO 9001, CE Certified, RoHS
Cabinet	Lockable; Available in Black, Silver, Carbon Fiber, Burl Wood; Custom Colors Available with OEM Quantity Orders		
Hot Swappable	100%		



Contact Information:

Slot Technicians: slottechsupport@futurelogic-inc.com
 General Information: info@futurelogic-inc.com
 Website: www.futurelogic-inc.com

This document describes product functions and technology that may not be available in a particular gaming jurisdiction, and would therefore not be available for sale and not approved for use at this time. Please contact your local sales representative for information concerning what features are available in your jurisdiction. All mentions of "voucher" or "vouchers" in this document refer to "Slot Machine Payout Receipt" or "Slot Machine Wagering Voucher" and all mentions of "coupon" or "coupons" in this document refer to "Slot Machine Coupon" according to *Technical Standards for Gaming and Online Slot Machines (Rev 03/06)*.

FutureLogic, Inc.
 425 E. Colorado Street, Suite 100
 Glendale, CA 91205
 United States of America
 Tel: 818.244.4700
 Fax: 818.244.4764

FutureLogic Europe
 Unit 6, Cordwallis Industrial Estate
 Clivemont Road, Maidenhead, SL6 7BU
 United Kingdom
 Tel: +44.1628 760.080
 Fax: +44.1628.760.089

FutureLogic Asia
 Avenida Da Praia Grande, No. 369-371
 Edificio Keng Ou, 20 andar A,
 Macau
 tel: +853.2838.9702
 fax: +853.2838.9701

FutureLogic Australia
 Suite 2201, Level 22, Westfield Tower 2
 Bondi Junction, NSW 2202
 Australia
 tel: +61.1300.643.683
 fax: +61.1300.362.743